

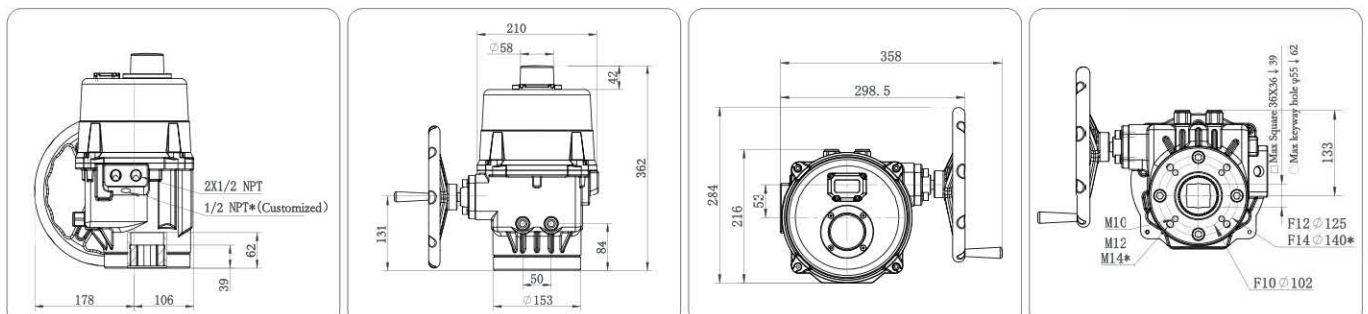
## ■ EP500 General Parameter / Outline Drawing

| General Parameter       | 0~90° Travel Time (S)  | Model   |   |        |                             |        |    |    |
|-------------------------|--|---------|---|--------|-----------------------------|--------|----|----|
|                         |  | Voltage |   | P1     | P2                          | P3     | P4 | P5 |
|                         |  | 300N·m  | 400N·m  | 500N·m | 650N·m                      | 800N·m |    |    |
|                         | 110V AC  | 14      | 16  | 19     | 22                          | 27     |    |    |
|                         | 220V AC  | 14      | 16  | 19     | 22                          | 27     |    |    |
| Control Mode            | E-Electronic on-off  |         | S-Smart on-off                                |        | R-Smart modulating          |        |    |    |
| Rotation Angle          | 0~90°  |         | 0~90~180°/0~270°                              |        | 0~90°                       |        |    |    |
| Duty Cycle              | S2 100% (60min)  |         |   |        | S4 50%[P1-P3]/S4 70%[P4-P5] |        |    |    |
| Environment Temp.       | -13~158°F  |         | -25~70°C                                      |        |                             |        |    |    |
| Weight                  | 24kgs  |         |   |        |                             |        |    |    |
| Field Operation Modular | N  |         | Y   |        | Y                           |        |    |    |
| Manual Operation Type   | Handwheel  |         |   |        |                             |        |    |    |
| Protection Grade        | IP67/NEMA 4/NEMA4X/NEMA6/NEMA6P  |         |   |        |                             |        |    |    |
| Electric Connection     | 2*1/2NPT   |         |   |        |                             |        |    |    |
| Motor                   | Brushless DC motor   |         |   |        |                             |        |    |    |
| Multi-level protection  | Double-level over heat protection(motor/interior actuator)&Over current protection |         |   |        |                             |        |    |    |
| Indicator               | 360° Visible indicator   |         | 360° Visible LED indicator                    |        | 360° Visible indicator      |        |    |    |
| Heater                  | 25W,The heater works when the ambient temperature is lower than 15°C               |         |   |        |                             |        |    |    |
| Corrosion Protection    | Aluminium alloy enclosure with ISO 12944 C03-02 standard powder painting           |         |   |        |                             |        |    |    |
| Feedback Signal         | Open/Close/Error   |         | 3 programmable relays output feedback signals |        |                             |        |    |    |
| Bus Type                | Modbus   |         |   |        |                             |        |    |    |
| Optional Function       | Bluetooth/IP68/360° Visible LED indicator/25°C heater/C05 corrosion protection     |         |   |        |                             |        |    |    |

|                           |                   |  |
|---------------------------|-------------------|--|
| Modulating type parameter | Regulating Number | Up to 2 million times, 600 times starts max/hour |
|                           | Step Accuracy     | 0.62%/ 160 steps                                 |
|                           | Dead Zone         | ±0.5% (0.5°)                                     |
|                           | Reaction Time     | <1S  |
|                           | Linearity         | 0.02   |
|                           | Bus Type          | Modbus   |
|                           | Input Signal      | 1-5V,2-10V,4-20mA                                |
|                           | Output Signal     | 1-5V,2-10V,4-20mA                                |
|                           | Feedback Signal   | 3 programmable relays output feedback signals    |

| Model      | Power | Rated current(A) |        | Locked-rotor current(A) |        |
|------------|-------|------------------|--------|-------------------------|--------|
|            | W     | AC110V           | AC220V | AC110V                  | AC220V |
| EP500P1-P5 | 100   | 2.2              | 1.2    | 3.30                    | 1.80   |

### EP500P1-P5



## ■ EP/EA Series General Parameter

| Series | Model   | Max Torque(N·m) |                  |                                  | Max Torque(in-lb) |                  |                                  | 0~90°Travel time (S) |                  |                                 |                                 |                      |
|--------|---------|-----------------|------------------|----------------------------------|-------------------|------------------|----------------------------------|----------------------|------------------|---------------------------------|---------------------------------|----------------------|
|        |         | AC/DC<br>24V    | AC110V<br>AC220V | AC110V<br>AC220V<br>AC380<br>3PH | AC/DC<br>24V      | AC110V<br>AC220V | AC110V<br>AC220V<br>AC380<br>3PH | AC/DC<br>24V         | AC110V<br>AC220V | 50HZ<br>AC110V<br>AC220V<br>3PH | 60HZ<br>AC110V<br>AC220V<br>3PH | 50HZ<br>AC380<br>3PH |
| EP     | EP20P1  | 10              | 10               | /                                | 89                | 89               | /                                | 9                    | 6                | /                               | /                               | /                    |
|        | EP20P2  | 14              | 14               | /                                | 124               | 124              | /                                | 11                   | 8                | /                               | /                               | /                    |
|        | EP20P3  | 20              | 20               | /                                | 177               | 177              | /                                | 15                   | 11               | /                               | /                               | /                    |
|        | EP50P1  | 35              | 35               | /                                | 310               | 310              | /                                | 11                   | 8                | /                               | /                               | /                    |
|        | EP50P2  | 50              | 50               | /                                | 443               | 443              | /                                | 14                   | 12               | /                               | /                               | /                    |
|        | EP100P1 | 80              | 80               | /                                | 708               | 708              | /                                | 20                   | 16               | /                               | /                               | /                    |
|        | EP100P2 | 100             | 100              | /                                | 885               | 885              | /                                | 27                   | 18               | /                               | /                               | /                    |
|        | EP200P1 | 150             | 150              | /                                | 1328              | 1328             | /                                | 22                   | 8                | /                               | /                               | /                    |
|        | EP200P2 | 200             | 200              | /                                | 1770              | 1770             | /                                | 31                   | 10.5             | /                               | /                               | /                    |
|        | EP200P3 | 250             | 250              | /                                | 2213              | 2213             | /                                | 35                   | 13               | /                               | /                               | /                    |
|        | EP200P4 | /               | 300              | /                                | /                 | 2655             | /                                | /                    | 15               | /                               | /                               | /                    |
|        | EP200P5 | /               | 400              | /                                | /                 | 3540             | /                                | /                    | 17               | /                               | /                               | /                    |
|        | EP500P1 | /               | 300              | /                                | /                 | 2655             | /                                | /                    | 14               | /                               | /                               | /                    |
|        | EP500P2 | /               | 400              | /                                | /                 | 3540             | /                                | /                    | 16               | /                               | /                               | /                    |
|        | EP500P3 | /               | 500              | /                                | /                 | 4425             | /                                | /                    | 19               | /                               | /                               | /                    |
|        | EP500P4 | /               | 650              | /                                | /                 | 5753             | /                                | /                    | 22               | /                               | /                               | /                    |
|        | EP500P5 | /               | 800              | /                                | /                 | 7080             | /                                | /                    | 27               | /                               | /                               | /                    |
| EA     | EA200P1 | /               | /                | 150                              | /                 | /                | 1328                             | /                    | /                | 30                              | 25                              | 30                   |
|        | EA200P2 | /               | /                | 200                              | /                 | /                | 1770                             | /                    | /                | 30                              | 36                              | 36                   |
|        | EA500P1 | /               | /                | 300                              | /                 | /                | 2655                             | /                    | /                | 19                              | 23                              | 23                   |
|        | EA500P2 | /               | /                | 400                              | /                 | /                | 3540                             | /                    | /                | 25                              | 30                              | 30                   |
|        | EA500P3 | /               | /                | 500                              | /                 | /                | 4425                             | /                    | /                | 30                              | 35                              | 35                   |

Note: 1.The motor for EP series is Brushless DC motor and for EA series is AC asynchronous motor.  
2.The travel time for 60Hz is 1.2 times faster than 50Hz.

